

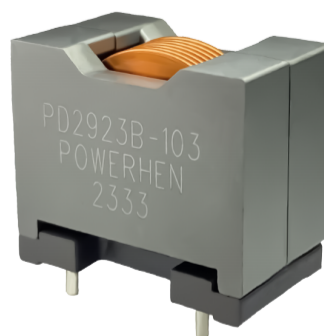
PD2923B

HIGH CURRENT POWER INDUCTOR

大电流功率电感

Features 特点

- Flat wire windings provide extremely low DC and AC resistance.
扁平绕组提供极低的直流和交流电阻
- Low radiation noise by magnetically shielded construction
闭合磁路封装，低辐射
- Low loss ferrite cores provide flat L vs I
低损耗铁氧体磁芯提供平坦的 L 与 I
- Operating temperature : -40°C~+125°C.
工作温度：-40°C~+125°C
- Through-hole (TH) mounting for rugged board attachment
通孔 (TH) 安装，用于坚固的电路板连接
- Moisture Sensitivity Level (MSL) 1 (unlimited floor life at <30°C / 85% relative humidity)
湿气敏感度等级 (MSL) 1 (在 <30° C 时的无限车间寿命/ 85% 相对湿度)



Applications 应用

- high efficiency DC/DC converters. 高效 DC/DC 转换器
- Single and polyphase buck converters. 单相、多相降压转换器
- Filter for audio applications. 音频滤波应用
- Optimized for high current boost applications. 大电流升压应用优化

Electrical characteristics 电气特性

Part number 料号	Inductance ^① 电感量 μH ± 10%	DCR ^② 直流电阻 mΩ		SRF ^③ 自谐振频率 MHz				Isat ^④ 饱和电流 A typ			Irms ^⑤ 温升电流 A max.	
		Typ	Max.	typical	10% drop	20% drop	30% drop	20°C rise	40°C rise			
PD2923B-332KL	3.3	2.2	2.6	40	95	104	108	20	28			
PD2923B-472KL	4.7	2.2	2.6	30	63	69	72	20	28			
PD2923B-682KL	6.8	2.2	2.6	25	48	53	56	20	28			
PD2923B-103KL	10	2.2	2.6	20	30	34	37	20	28			
PD2923B-153KL	15	2.2	2.6	16	20.4	23	24.4	20	28			
PD2923B-223KL	22	2.2	2.6	13	12.2	14.6	16.4	20	28			
PD2923B-333KL	33	2.2	2.6	10	7.5	9.2	10.3	20	28			

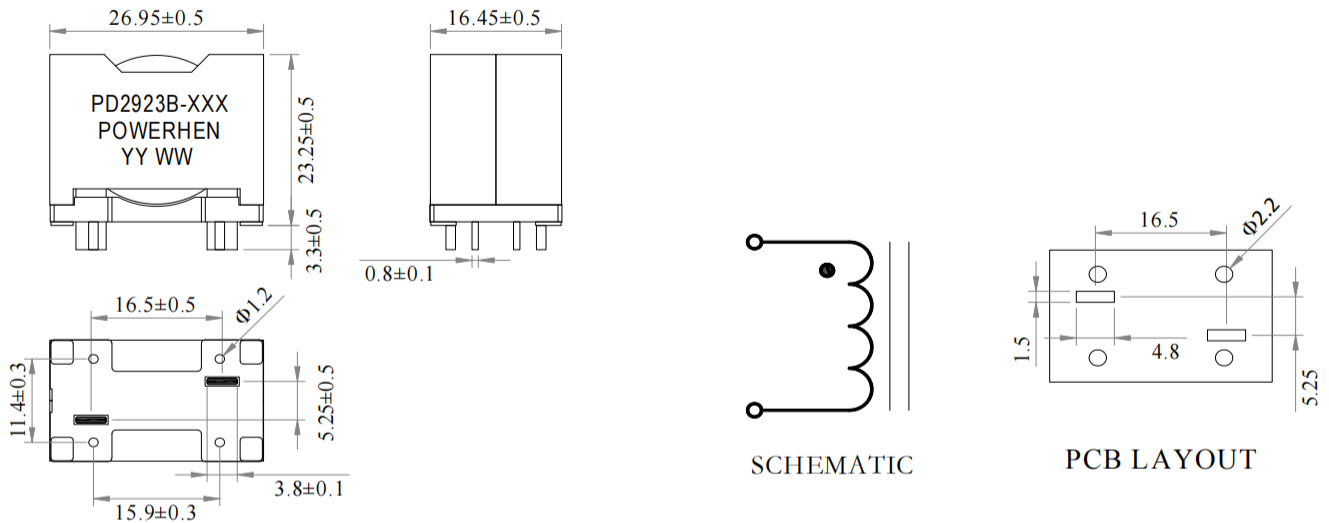
Remark

- ① Inductance is measured with a LCR meter Agilent 4284A or equivalent.
Test frequency at 100kHz
- ② DC resistance is measured with Keithley 580 Milliohm Meter, or equivalent.
Reference ambient temperature 25°C
- ③ SRF measured using an Agilent 4395A network analyzer and an Agilent 16193A test fixture.
- ④ DC current at 25°C that causes the specified Inductance drop from its value without current.
- ⑤ Current that causes the specified temperature rise from 25°C ambient. This information is for reference only and does not represent absolute maximum ratings.
- ⑥ Electrical specifications at 25°C

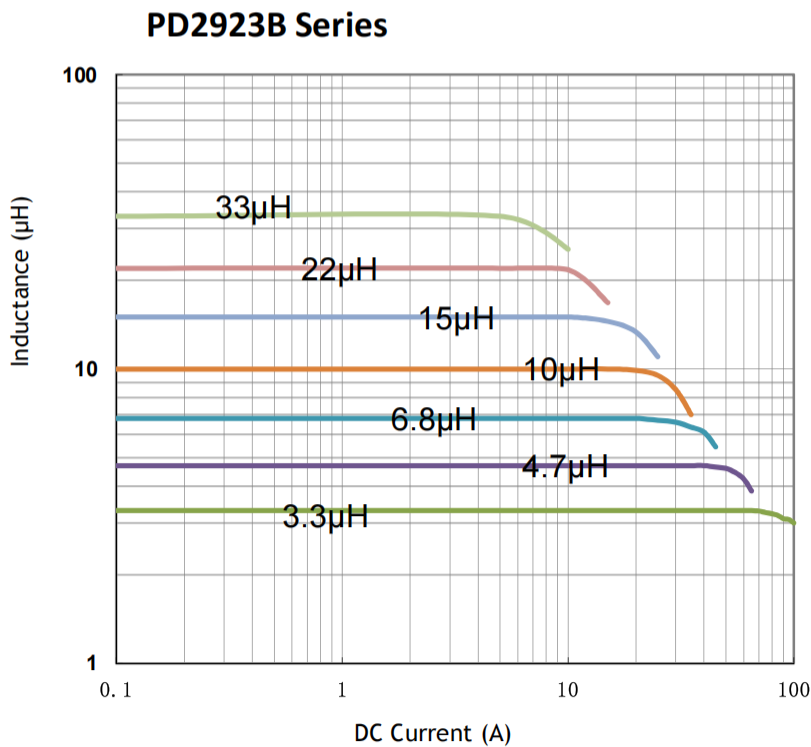
备注

- ① 电感量测试采用 Agilent 4284A 数字电桥或同等仪器；
测试频率 100KHz
- ② 直流电阻测试采用 Keithley 580 毫欧表或同等仪器；
环境温度 25° C
- ③ SRF 使用 Agilent 4395A 网络分析仪和 Agilent 16193A 测试夹具测量。
- ④ 直流电流在 25° C，加载导致指定电感从没有电流的值下降。
- ⑤ 导致指定温度从 25° C 环境温度上升的电流。此信息仅供参考，不代表绝对最大额定值。
- ⑥ 25° C 时的电气规格

Dimensions 结构尺寸

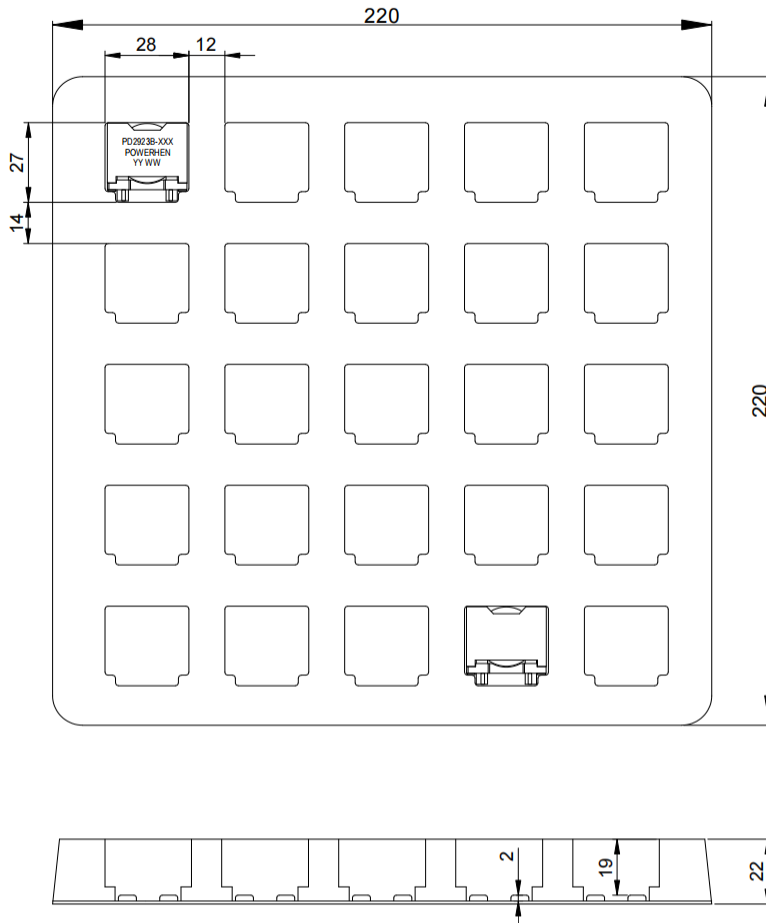


Electrical Characteristic Curve 电气特性曲线



■ Packaging Specification - tray: [mm]

包装规格 - 托盘包装: [mm]



Weight 重量: 38.4~39.2g/PCS
 Packaging 包装数量: 25 PCS/盘